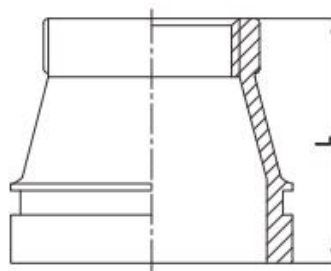


Grooved concentric reducer with female threaded outlet

Grooved concentric reducer with female threaded outlet is a concentric reducer with different pipe diameters at both ends and overlapping centerlines. The outlet end is designed with an internal thread and is used to connect pipes of different pipe diameters and adapt to internal thread components



- **Standard:** ANSI / UL 213C UL / FM
- **Material:** Ductile iron ASTM A536, 65-45-12
- **Thread run:** Female thread, NPT / BSPT
- **Rated pressure:** 300 - 500 psi
- **Surface:** Red painting / hot dip galvanized
- **Size range:** 1-1/2"×1" - 8"×4"



Available size

Size			End to end
Inch	DN	mm	L(mm)
1-1/2" × 1"	40 × 25	48.3 × 33.7	64
2" × 1/2"	50 × 15	60.3 × 21.3	64
2" × 3/4"	50 × 20	60.3 × 26.9	64
2" × 1"	50 × 25	60.3 × 33.7	64
2" × 1-1/4"	50 × 32	60.3 × 42.4	64
2" × 1-1/2"	50 × 40	60.3 × 48.3	64
2-1/2" × 1"	65 × 25	73.0 × 33.7	64
2-1/2" × 1-1/4"	65 × 32	73.0 × 42.4	64
2-1/2" × 1-1/2"	65 × 40	73.0 × 48.3	64
2-1/2" × 2"	65 × 50	73.0 × 60.3	64
2-1/2" × 1/2"	65 × 15	76.1 × 21.3	64
2-1/2" × 3/4"	65 × 20	76.1 × 26.9	64

Grooved concentric reducer with female threaded outlet

Available size

Size			End to end
Inch	DN	mm	L(mm)
2-1/2" × 1"	65 × 25	76.1 × 33.7	64
2-1/2" × 1-1/4"	65 × 32	76.1 × 42.4	64
2-1/2" × 1-1/2"	65 × 40	76.1 × 48.3	64
2-1/2" × 2"	65 × 50	76.1 × 60.3	64
3" × 1"	80 × 25	88.9 × 33.7	64
3" × 1-1/4"	80 × 32	88.9 × 42.4	64
3" × 1-1/2"	80 × 40	88.9 × 48.3	64
3" × 2"	80 × 50	88.9 × 60.3	64
3" × 2-1/2"	80 × 65	88.9 × 73.0	64
3" × 2-1/2"	80 × 65	88.9 × 76.1	64
4" × 1"	100 × 25	114.3 × 33.7	76
4" × 1-1/4"	100 × 32	114.3 × 42.4	76
4" × 1-1/2"	100 × 40	114.3 × 48.3	76
4" × 2"	100 × 50	114.3 × 60.3	76
4" × 2-1/2"	100 × 65	114.3 × 73.0	76
4" × 2-1/2"	100 × 65	114.3 × 76.1	76
4" × 3"	100 × 80	114.3 × 88.9	76
5" × 1"	125 × 25	139.7 × 33.7	89
5" × 1-1/4"	125 × 32	139.7 × 42.4	89
5" × 1-1/2"	125 × 40	139.7 × 48.3	89
5" × 2"	125 × 50	139.7 × 60.3	89
5" × 2-1/2"	125 × 65	139.7 × 76.1	89
5" × 3"	125 × 80	139.7 × 88.9	89
5" × 4"	125 × 100	139.7 × 114.3	89
6" × 1"	150 × 25	165.1 × 33.7	102
6" × 1-1/4"	150 × 32	165.1 × 42.4	102
6" × 1-1/2"	150 × 40	165.1 × 48.3	102
6" × 2"	150 × 50	165.1 × 60.3	102
6" × 2-1/2"	150 × 65	165.1 × 76.1	102
6" × 3"	150 × 80	165.1 × 88.9	102
6" × 4"	150 × 100	165.1 × 114.3	102
6" × 1"	150 × 25	168.3 × 33.7	102
6" × 2"	150 × 50	168.3 × 60.3	102
6" × 3"	150 × 80	168.3 × 88.9	102

Grooved concentric reducer with female threaded outlet

Available size

Size			End to end
Inch	DN	mm	L(mm)
6" × 4"	150 × 100	168.3 × 114.3	102
8" × 1-1/2"	200 × 40	219.1 × 48.3	127
6" × 4"	150 × 100	168.3 × 114.3	102
8" × 1-1/2"	200 × 40	219.1 × 48.3	127
8" × 2"	200 × 50	219.1 × 60.3	127
8" × 2-1/2"	200 × 65	219.1 × 76.1	127
8" × 3"	200 × 80	219.1 × 88.9	127
8" × 4"	200 × 100	219.1 × 114.3	127