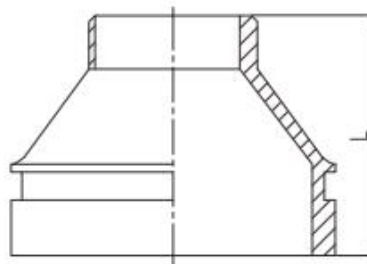


Grooved concentric reducer with male threaded outlet

Grooved concentric reducer with male threaded outlet is a concentric reducer with different pipe diameters at both ends and overlapping centerlines. The outlet end is designed with an external thread and is used to connect pipes of different pipe diameters and adapt to external thread components



- Standard:** ANSI / UL 213C UL / FM
- Material:** Ductile iron ASTM A536, 65-45-12
- Thread run:** Male thread, NPT / BSPT
- Rated pressure:** 300 - 500 psi
- Surface:** Red painting / hot dip galvanized
- Size range:** 2"×1" - 4"×3"



Available size

Size			End to end
Inch	DN	mm	L(mm)
2" × 1"	50 × 25	60.3 × 33.7	64
2" × 1-1/4"	50 × 32	60.3 × 42.4	64
2" × 1-1/2"	50 × 40	60.3 × 48.3	64
2-1/2" × 1"	65 × 25	73.0 × 33.7	64
2-1/2" × 1-1/4"	65 × 32	73.0 × 42.4	64
2-1/2" × 1-1/2"	65 × 40	73.0 × 48.3	64
2-1/2" × 2"	65 × 50	73.0 × 60.3	64
2-1/2" × 2"	65 × 50	76.1 × 60.3	64
3" × 1"	80 × 25	88.9 × 33.7	64
3" × 1-1/2"	80 × 40	88.9 × 48.3	64
3" × 2"	80 × 50	88.9 × 60.3	64
3" × 2-1/2"	80 × 65	88.9 × 73.0	64



Grooved concentric reducer with male threaded outlet

Available size

Size			End to end
Inch	DN	mm	L(mm)
4" × 1"	100 × 25	114.3 × 33.7	76.1
4" × 1-1/2"	100 × 40	114.3 × 48.3	76.1
4" × 2"	100 × 50	114.3 × 60.3	76.1
4" × 2-1/2"	100 × 65	114.3 × 73.0	76.1
4" × 3"	100 × 80	114.3 × 88.9	76.1