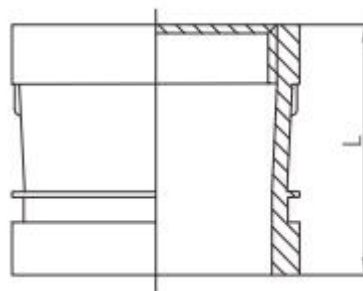


Grooved x female threaded adapter nipple

Grooved x female threaded adapter nipple is a short threaded adapter with a grooved connection structure at one end and an internal thread at the other end, used for the transitional connection between the grooved connection and the internal thread connection



- **Standard:** ANSI / UL 213C UL / FM
- **Material:** Ductile iron ASTM A536, 65-45-12
- **Thread run:** Female thread, NPT / BSPT
- **Rated pressure:** 300 - 500 psi
- **Surface:** Red painting / hot dip galvanized
- **Size range:** 2" - 4"



Available size

Size			End to end
Inch	DN	mm	L(mm)
2"	50	60.3	64
2-1/2"	65	73.0	70
3"	80	88.9	70
4"	100	114.3	83