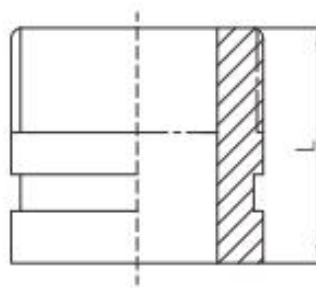


Grooved x male threaded adapter nipple

Grooved x male threaded adapter nipple is a short threaded adapter with a grooved connection structure at one end and an external thread at the other end, used for the transitional connection between the grooved connection and the external thread connection



- Standard:** ANSI / UL 213C UL / FM
- Material:** Ductile iron ASTM A536, 65-45-12
- Thread run:** Male thread, NPT / BSPT
- Rated pressure:** 300 - 500 psi
- Surface:** Red painting / hot dip galvanized
- Size range:** 1-1/2" - 2"



Available size

Size			End to end
Inch	DN	mm	L(mm)
1-1/2"	40	48.3	63
2"	50	60.3	63