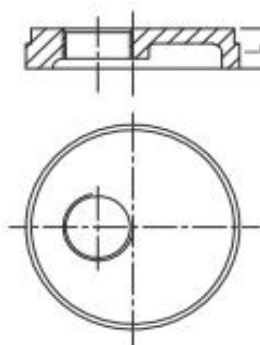


## Grooved drain cap with eccentric hole

Grooved drain cap with eccentric hole is a drainage cap with a grooved connection structure. The opening position is off-center from the center of the cap. It is installed at the end of the pipe through a grooved connection and can be used for directional drainage or to fit the requirements of a particular pipe layout



- **Standard:** ANSI / UL 213C UL / FM
- **Material:** Ductile iron ASTM A536, 65-45-12
- **Eccentric hole:** Female thread, NPT / BSPT
- **Rated pressure:** 300 - 500 psi
- **Surface:** Red painting / hot dip galvanized
- **Size range:** 1-1/2"×1" - 8"×2"



Available size

Size			End to end
Inch	DN	mm	L(mm)
1-1/2" × 1"	40 × 25	48.3 × 33.7	24
2" × 1/2"	50 × 15	60.3 × 21.3	24
2" × 1"	50 × 25	60.3 × 33.7	25
2" × 1-1/2"	50 × 40	60.3 × 48.3	25
2-1/2" × 1/2"	65 × 15	73.0 × 21.3	24
2-1/2" × 1"	65 × 25	73.0 × 33.7	25
2-1/2" × 1"	65 × 25	76.1 × 33.7	24
2-1/2" × 1-1/2"	65 × 40	76.1 × 48.3	25
2-1/2" × 2"	65 × 50	76.1 × 60.3	25
3" × 1/2"	80 × 15	88.9 × 21.3	24



# Grooved drain cap with concentric hole

Available size

Size			End to end
Inch	DN	mm	L(mm)
3" × 1"	80 × 25	88.9 × 33.7	24
3" × 1-1/2"	80 × 40	88.9 × 48.3	24
3" × 2"	80 × 50	88.9 × 60.3	24
4" × 1/2"	100 × 15	114.3 × 21.3	25
4" × 1"	100 × 25	114.3 × 33.7	27
4" × 1-1/2"	100 × 40	114.3 × 48.3	27
4" × 2"	100 × 50	114.3 × 60.3	27
5" × 1-1/2"	125 × 40	139.7 × 48.3	27
5" × 2"	125 × 50	139.7 × 60.3	27
6" × 1-1/2"	150 × 40	165.1 × 48.3	27
6" × 1"	150 × 25	168.3 × 33.7	25
6" × 1-1/2"	150 × 40	168.3 × 48.3	27
6" × 2"	150 × 50	168.3 × 60.3	27
8" × 1-1/2"	200 × 40	219.1 × 48.3	30
8" × 2"	200 × 50	219.1 × 60.3	30