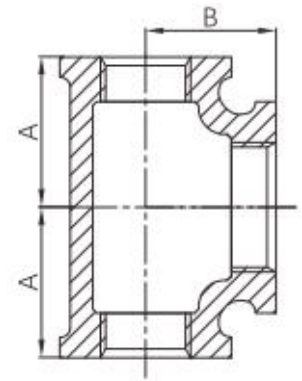


Malleable iron reducing tee (Bull head tee)

Malleable iron bull head reducing tee, with strong adaptability at large port, stable, pressure-resistant, corrosion-resistant, and efficient in flow division.



- **Standard:** ANSI/ASME B16.3
UL/FM
- **Material:** Malleable iron ASTM A197
- **Thread:** NPT
- **W. pressure:** Class 150, 300 psi (-29°C to 66°C)
- **Surface:** Black iron / hot dip galvanized
- **Size Range:** 1/2" x 1/2" x 3/4" --- 2" x 2" x 2-1/2" (Class 150)



Available size(Class 150)

SIZE			A	B
INCH	DN	MM	MM	MM
1/2" x 1/2" x 3/4"	15 x 15 x 20	21.3 x 21.3 x 26.7	31	30.5
1/2" x 1/2" x 1"	15 x 15 x 25	21.3 x 21.3 x 33.4	34.6	32
3/4" x 3/4" x 1"	20 x 20 x 25	26.7 x 26.7 x 33.4	36.8	34.8
3/4" x 3/4" x 1-1/4"	20 x 20 x 32	26.7 x 26.7 x 42.2	41.2	36.8
1" x 1" x 1-1/4"	25 x 25 x 32	33.4 x 33.4 x 42.2	42.4	40.1
1" x 1" x 1-1/2"	25 x 25 x 40	33.4 x 33.4 x 48.3	45.7	41.9
1" x 1" x 2"	25 x 25 x 50	33.4 x 33.4 x 60.3	51.3	48.9
1-1/4" x 1-1/4" x 1-1/2"	32 x 32 x 40	42.2 x 42.2 x 48.3	47.8	46.2
1-1/4" x 1-1/4" x 2"	32 x 32 x 50	42.2 x 42.2 x 60.3	53.3	48.3
1-1/2" x 1-1/2" x 2"	40 x 40 x 50	48.3 x 48.3 x 60.3	54.9	51.3
2" x 2" x 2-1/2"	50 x 50 x 65	60.3 x 60.3 x 73.0	66	60.7