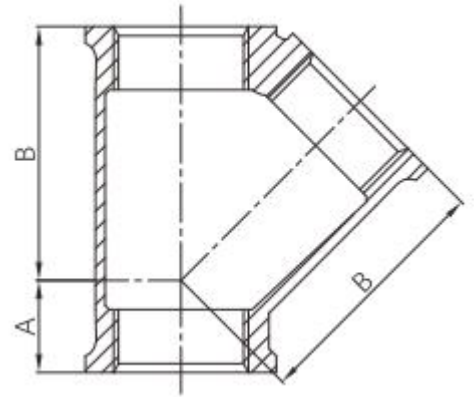


Malleable iron 45° Y-branch (Lateral)

Malleable iron 45° Y-branch (Lateral) ensures efficient 45° flow division, firm connection, pressure and corrosion resistance, with flexible adaptation.



- **Standard:** ANSI/ASME B16.3
UL/FM
- **Material:** Malleable iron ASTM A197
- **Thread:** NPT
- **W. pressure:** Class 150, 300 psi (-29°C to 66°C)
- **Surface:** Black iron / hot dip galvanized
- **Size Range:** 1/2" ---4" (Class 150)



Available size(Class 150)

SIZE			A	B
INCH	DN	MM	MM	MM
1/2"	15	21.3	15.5	43.4
3/4"	20	26.7	18.3	52.1
1"	25	33.4	21.6	61.7
1-1/4"	32	42.2	25.9	74.2
1-1/2"	40	48.3	27.9	83.3
2"	50	60.3	37.5	99.8
2-1/2"	65	73	38.6	120.1
3"	80	88.9	43.4	141
4"	100	114.3	51.1	177