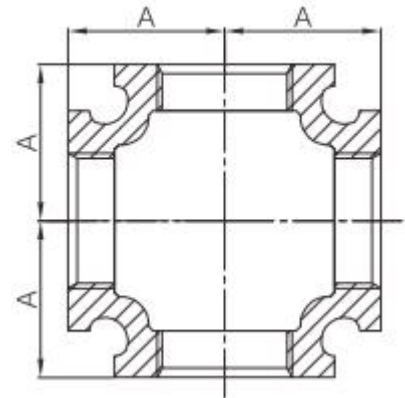


## Malleable iron straight cross

Malleable iron straight cross offers strong four-way connectivity, even flow distribution, pressure and corrosion resistance, and easy installation.



- **Standard:** ANSI/ASME B16.3  
UL/FM
- **Material:** Malleable iron ASTM A197
- **Thread:** NPT
- **W. pressure:** Class 150, 300 psi (-29°C to 66°C)
- **Surface:** Black iron / hot dip galvanized
- **Size Range:** 1/2" ---4" (Class 150)



### Available size(Class 150)

SIZE			A
INCH	DN	MM	MM
1/2"	15	21.3	28.5
3/4"	20	26.7	33.3
1"	25	33.4	38.1
1-1/4"	32	42.2	44.5
1-1/2"	40	48.3	49.3
2"	50	60.3	57.2
2-1/2"	65	73	68.6
3"	80	88.9	78.2
4"	100	114.3	96.3